



Hotels Projects

HOTELS PROJECTS WITH FLOOVER

- Hotel Only You (Madrid, Spain)
- Hotel Crowne Plaza (Barcelona, Spain)
- Metropole Hotel (Interlaken, Switzerland)
- Hard Rock Hotel (Ibiza, Spain)
- B&B Itaca Fregene (Roma, Italy)
- Garberhof Hotel (Malles, Italy)
- Hotel Avenida Sofia Sitges (Barcelona, Spain)
- AC Hotel Barcelona Forum (Barcelona, Spain)
- Hotel **Bitácora**(Tenerife, Spain)
- Hotel Madfor (Madrid, Spain)
- Maxima Zarya Hotel (Moscow, Russia)
- City Hotel (Thessaloniki, Greece)
- Hotel **Estela Sitges** (Barcelona, Spain)
- Hotel **Jingjing** (Shanghai, China)
- Amoy Hotel (Singapore)
- Hotel Royal Plaza (Ibiza, Spain)
- Hotel Sunprime (Gran Canaria, Spain)
- Lago Di Garda Hotel (Lago di Garda, Italy)
- **Zubarah Hotel** (Doha, Qatar)



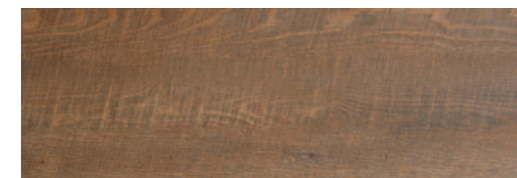
AN EXCLUSIVE EXPERIENCE IS A XIX CENTURY BUILDING

The synchronous pore structure of Synchro lines is one of the most innovative decorative elements in the flooring design, as it is capable of superbly enhancing the natural grain and contrasts of the wood, giving depth and realism to the entire surface.

The tactile sensation bestowed by the flooring is able to reproduce the authenticity and uniqueness of natural wood although it is not real wood.

Synchro range embodies perfectly all these features, as well to ensure, thanks to a surface of 0.5 mm PVC, a very high abrasion resistance for any requirement in both residential and commercial.

Floover **HDF** solution consists of 5 layers. The top layer is a resistant transparent PVC to protect the decor. This adapts perfectly to the elasticity of the vinyl below creating a nice walking surface. The fourth layer of HDF incorporates the clic installation system. The ultimate layer of cork gives an excellent thermal and acoustic insulation.



SC3004 - Synchro Rustic Oak Amsterdam



RELAX AND MASSAGE NEXT TO FIRA BARCELONA

The synchronous pore structure of Synchro lines is one of the most innovative decorative elements in the flooring design, as it is capable of superbly enhancing the natural grain and contrasts of the wood, giving depth and realism to the entire surface.

The tactile sensation bestowed by the flooring is able to reproduce the authenticity and uniqueness of natural wood although it is not real wood.

Synchro range embodies perfectly all these features, as well to ensure, thanks to a surface of 0.5 mm PVC, a very high abrasion resistance for any requirement in both residential and commercial.

The rigid board used, Floover **SplasH₂O Light**, is a 100% waterproof solution, with a PVC base of 5 mm.

The clic system guarantees resistance up to 450 kg/ml.



SC3010 - Plank Harmony Light



SURROUNDED BY MOUNTAINS

Floover Ceramic broadens the horizons of your imagination. It is able to instil in a harmonious and elegant way, spaces with large dimensions. A collection with infinite possibilities and unique characteristics of durability and comfort designed to meet all your needs with extraordinary simplicity.

The rigid board used, Floover **SplasH₂O Light**, is a 100% waterproof solution, with a PVC base of 5 mm. The clic system guarantees resistance up to 450 kg/ml.



CR1102 - Ceramic Perla



A 5-STAR EXPERIENCE THAT ROCKS

Floover Country line, in its vivid and welcoming aspect, is able to give a hospitable warmth that can make your guests feel at ease. The wooden-look decors are so realistic that they recreate rustic and natural scenarios like those of old country houses.

A comfortable atmosphere that gives your home a touch of tradition.

The rigid board used, Floover **SplasH₂O Light**, is a 100% waterproof solution, with a PVC base of 5 mm. The clic system guarantees resistance up to 450 kg/ml.



CT1702 - Country Tradition Classic



BRIGHT ROOMS WITH TERRACE

The synchronous pore structure of Synchro lines is one of the most innovative decorative elements in the flooring design, as it is capable of superbly enhancing the natural grain and contrasts of the wood, giving depth and realism to the entire surface.

The tactile sensation bestowed by the flooring is able to reproduce the authenticity and uniqueness of natural wood although it is not real wood.

Synchro range embodies perfectly all these features, as well to ensure, thanks to a surface of 0.5 mm PVC, a very high abrasion resistance for any requirement in both residential and commercial.

Floover **HDF** solution consists of 5 layers. The top layer is a resistant transparent PVC to protect the decor. This adapts perfectly to the elasticity of the vinyl below creating a nice walking surface. The fourth layer of HDF incorporates the clic installation system. The ultimate layer of cork gives an excellent thermal and acoustic insulation.



SC3010 - Synchro Plank Harmony Light



BEAUTY AND WELLNESS RESORT

Floover Country line, in its vivid and welcoming aspect, is able to give a hospitable warmth that can make your guests feel at ease. The wooden-look decors are so realistic that they recreate rustic and natural scenarios like those of old country houses.

A comfortable atmosphere that gives your home a touch of tradition. Floover HDF solution consists of 5 layers. The top layer is a resistant transparent PVC to protect the decor. This adapts perfectly to the elasticity of the vinyl below creating a nice walking surface. The fourth layer of HDF incorporates the clic installation system. The ultimate layer of cork gives an excellent thermal and acoustic insulation.



CT1702 - Country Tradition Classic



LUXURIOUS GYM BY THE BEACH

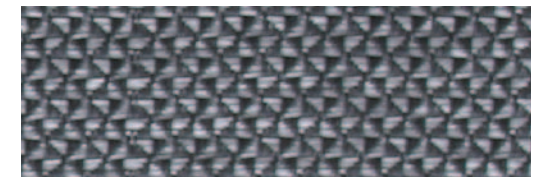
Floover **Woven** is a woven vinyl exclusive, inviting and unique.

The feeling of the textile is unmistakable, practically organic but the flooring, nevertheless, has all the advantages of vinyl: wear-resistant, easy to handle compared to textile floorings and simple to install. That is the reason why the architects had chosen this product for the gym.

Woven combines the craftsmanship and creativity with modern technology. The ultimate textile solution: Strong and high resistance with a unique look. The elasticity and acoustic insulation of its structure give this product great performances and comfort.

The rigid board used, Floover **SplasH₂O Light**, is a 100% waterproof solution, with a PVC base of 5 mm.

The clic system guarantees resistance up to 450 kg/ml.



WV4004 - Diamond Cut Grey



SPECTACULAR HALL WITH A SEA VIEW

All the warmth and taste of genuine and authentic life carefully designed to make you feel at home reassuring the atmosphere and personality.

Floover Wood range is the ideal flooring for those looking for a warm welcoming atmosphere, for those who want to bring in their own home a breath of authenticity with a modern and essential style.

This line is the best solution to combine elegance, modernity, relevant technical contents, comfort and high resistance.

The solution used guarantees its lasting long life.

SplashH₂O is a revolutionary product, its 4-layer composition and its core of rigid high density pvc are 100% waterproof.



WD1006 - Wood Maple



COMFORTABLE AND COZY ROOMS

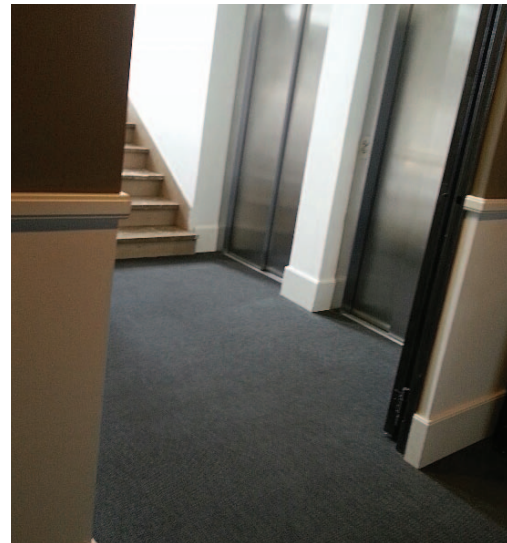
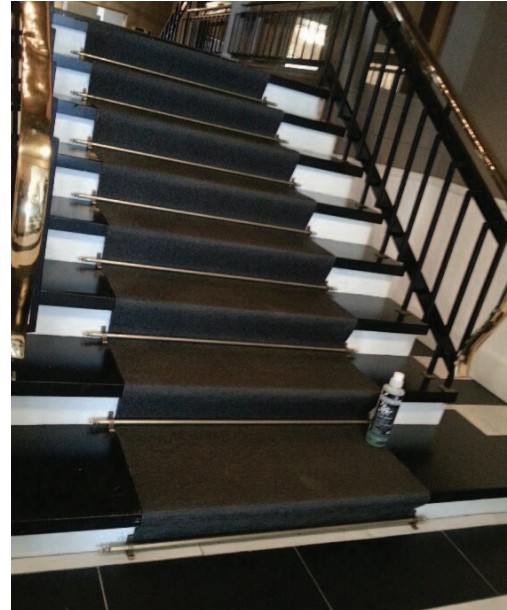
Floover Country line, in its vivid and welcoming aspect, is able to give a hospitable warmth that can make your guests feel at ease. The wooden-look decors are so realistic that they recreate rustic and natural scenarios like those of old country houses.

A comfortable atmosphere that gives your home a touch of tradition.

The rigid board used, Floover **SplasH₂O Light**, is a 100% waterproof solution, with a PVC base of 5 mm. The clic system guarantees resistance up to 450 kg/ml.



CT1705 - Country Rustic Dark



ELEGANT ENTRY FOYER

Floover **Woven** is a woven vinyl exclusive, inviting and unique.

The feeling of the textile is unmistakable, practically organic but the flooring, nevertheless, has all the advantages of vinyl: wear-resistant, easy to handle compared to textile floorings and simple to install.

Floover **Glue Down** solution is a traditional gluing system that allows you to install large areas with a small thickness. High traffic, comfort and acoustic performance are guaranteed.



WV4003 - Woven Calm Blue



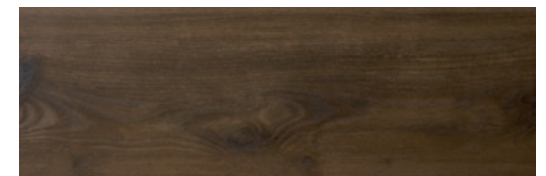
DINNING ROOM

The synchronous pore structure of Synchro lines is one of the most innovative decorative elements in the flooring design, as it is capable of superbly enhancing the natural grain and contrasts of the wood, giving depth and realism to the entire surface. The tactile sensation bestowed by the flooring is able to reproduce the authenticity and uniqueness of natural wood although it is not real wood.

Synchro range embodies perfectly all these features, as well to ensure, thanks to a surface of 0.5 mm PVC, a very high abrasion resistance for any requirement in both residential and commercial.

The solution used guarantees its lasting long life.

SplasH₂O is a revolutionary product, its 4-layer composition and its core of rigid high density pvc are 100% waterproof.



SC3007 - Synchro Harmony Dark



MODERN AND EXOTIC HOTEL

All the warmth and taste of genuine and authentic life carefully designed to make you feel at home reassuring the atmosphere and personality.

Floover Wood range is the ideal flooring for those looking for a warm welcoming atmosphere, for those who want to bring in their own home a breath of authenticity with a modern and essential style.

This line is the best solution to combine elegance, modernity, relevant technical contents, comfort and high resistance.

Floover HDF solution consists of 5 layers. The top layer is a resistant transparent PVC to protect the decor. This adapts perfectly to the elasticity of the vinyl below creating a nice walking surface. The fourth layer of HDF incorporates the clic installation system. The ultimate layer of cork gives an excellent thermal and acoustic insulation.



WD1002 - Wood Green Grey



MINIMAL AND MODERN ROOMS

Floover Country line, in its vivid and welcoming aspect, is able to give a hospitable warmth that can make your guests feel at ease. The wooden-look decors are so realistic that they recreate rustic and natural scenarios like those of old country houses.

A comfortable atmosphere that gives your home a touch of tradition.

The rigid board used, Floover **SplasH₂O Light**, is a 100% waterproof solution, with a PVC base of 5 mm. The clic system guarantees resistance up to 450 kg/ml.



CT1702 - Country Tradition Classic



CAFETERIA AND DINNING WITH A MEDITERRANEAN TOUCH

The synchronous pore structure of Synchro lines is one of the most innovative decorative elements in the flooring design, as it is capable of superbly enhancing the natural grain and contrasts of the wood, giving depth and realism to the entire surface. The tactile sensation bestowed by the flooring is able to reproduce the authenticity and uniqueness of natural wood although it is not real wood.

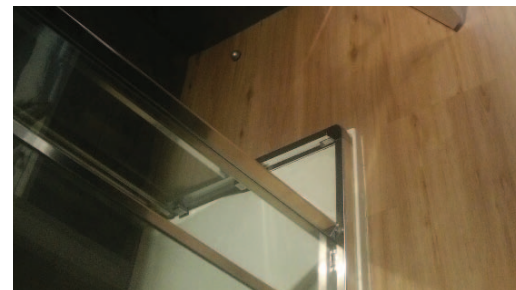
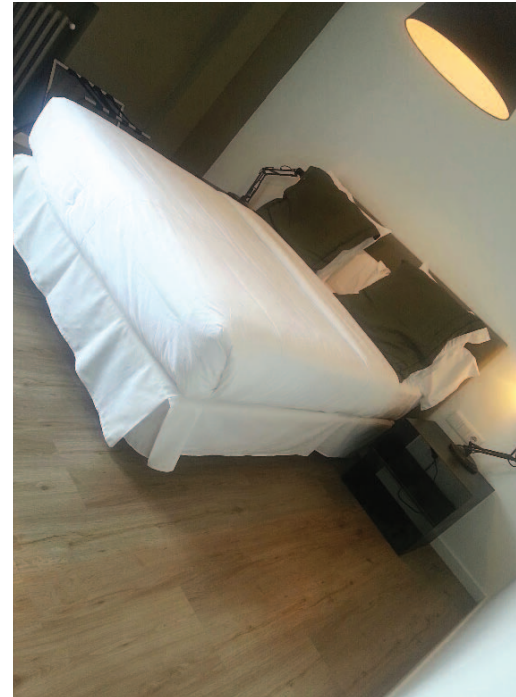
Synchro range embodies perfectly all these features, as well as to ensure, thanks to a surface of 0.5 mm PVC, a very high abrasion resistance for any requirement in both residential and commercial.

The solution used guarantees its lasting long life.

SplashH₂O is a revolutionary product, its 4-layer composition and its core of rigid high density pvc are 100% waterproof.



SC3005 - Synchro Rustic Oak Berlin



COZY AND WARM ROOMS

Floover Country line, in its vivid and welcoming aspect, is able to give a hospitable warmth that can make your guests feel at ease. The wooden-look decors are so realistic that they recreate rustic and natural scenarios like those of old country houses.

A comfortable atmosphere that gives your home a touch of tradition.

The solution for this installation was Floover HDF combined with **SplasH₂O** in bathrooms.

Floover HDF solution consists of 5 layers. The top layer is a resistant transparent PVC to protect the decor. The fourth layer of HDF incorporates the clic installation system. The ultimate layer of cork gives an excellent thermal and acoustic insulation.

SplasH₂O is a revolutionary product, its 4-layer composition and its core of rigid high density pvc are 100% waterproof.



CT1703 - Country Tradition Lime Washed

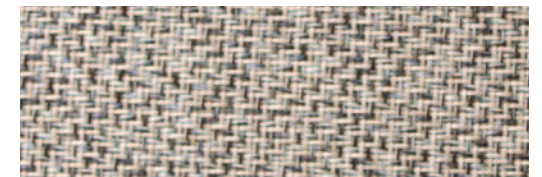


ATTRACTIVE BATHROOMS

Floover **Woven** is a woven vinyl exclusive, inviting and unique.

The feeling of the textile is unmistakable, practically organic but the flooring, nevertheless, has all the advantages of vinyl: wear-resistant, easy to handle compared to textile floorings and simple to install.

Floover **Glue Down** solution is a traditional gluing system that allows you to install large areas with a small thickness. High traffic, comfort and acoustic performance are guaranteed.



WV4012 - Woven Divine



THINKING OF FITNESS IN A DIFFERENT WAY

All the warmth and taste of genuine and authentic life carefully designed to make you feel at home reassuring the atmosphere and personality.

Floover Wood range is the ideal flooring for those looking for a warm welcoming atmosphere, for those who want to bring in their own home a breath of authenticity with a modern and essential style.

This line is the best solution to combine elegance, modernity, relevant technical contents, comfort and high resistance.

The solution used guarantees its lasting long life.

SplashH₂O is a revolutionary product, its 4-layer composition and its core of rigid high density pvc are 100% waterproof.



WD1006 - Wood Maple



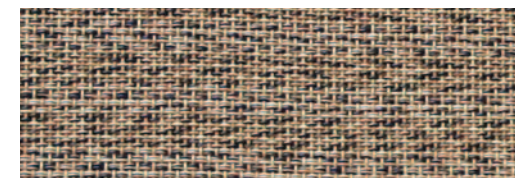
ROOMS THAT COMBINE STYLES

Floover **Woven** is a woven vinyl exclusive, inviting and unique.

The feeling of the textile is unmistakable, practically organic but the flooring, nevertheless, has all the advantages of vinyl: wear-resistant, easy to handle compared to textile floorings and simple to install.

The rigid board used, Floover **SplasH₂O Light**, is a 100% waterproof solution, with a PVC base of 5 mm.

The clic system guarantees resistance up to 450 kg/ml.



WV4002 - Woven Calm Beige



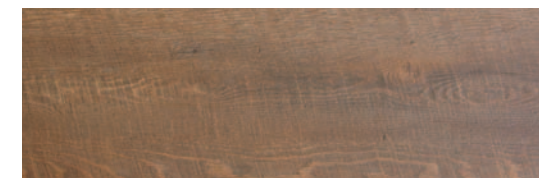
DESIGN AND ELEGANCE

The synchronous pore structure of Synchro lines is one of the most innovative decorative elements in the flooring design, as it is capable of superbly enhancing the natural grain and contrasts of the wood, giving depth and realism to the entire surface.

The tactile sensation bestowed by the flooring is able to reproduce the authenticity and uniqueness of natural wood although it is not real wood.

Synchro range embodies perfectly all these features, as well to ensure, thanks to a surface of 0.5 mm PVC, a very high abrasion resistance for any requirement in both residential and commercial.

Floover **HDF** solution consists of 5 layers. The top layer is a resistant transparent PVC to protect the decor. This adapts perfectly to the elasticity of the vinyl below creating a nice walking surface. The fourth layer of HDF incorporates the clic installation system. The ultimate layer of cork gives an excellent thermal and acoustic insulation.



SC3004 - Rustic Oak Amsterdam



CLASSIC ROOMS

All the warmth and taste of genuine and authentic life carefully designed to make you feel at home reassuring the atmosphere and personality.

Floover Wood range is the ideal flooring for those looking for a warm welcoming atmosphere, for those who want to bring in their own home a breath of authenticity with a modern and essential style.

This line is the best solution to combine elegance, modernity, relevant technical contents, comfort and high resistance.

Floover **HDF** solution consists of 5 layers. The top layer is a resistant transparent PVC to protect the decor. This adapts perfectly to the elasticity of the vinyl below creating a nice walking surface. The fourth layer of HDF incorporates the clic installation system. The ultimate layer of cork gives an excellent thermal and acoustic insulation.



WD1006 - Wood Maple



SPACIOUS RESTAURANT

The synchronous pore structure of Synchro lines is one of the most innovative decorative elements in the flooring design, as it is capable of superbly enhancing the natural grain and contrasts of the wood, giving depth and realism to the entire surface.

The tactile sensation bestowed by the flooring is able to reproduce the authenticity and uniqueness of natural wood although it is not real wood.

Synchro range embodies perfectly all these features, as well to ensure, thanks to a surface of 0.5 mm PVC, a very high abrasion resistance for any requirement in both residential and commercial.

The solution used guarantees its lasting long life.

SplashH₂O is a revolutionary product, its 4-layer composition and its core of rigid high density pvc are 100% waterproof



SC3010 - Synchro Plank Harmony Light

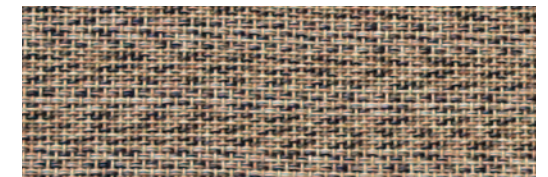


COLORFUL ROOMS

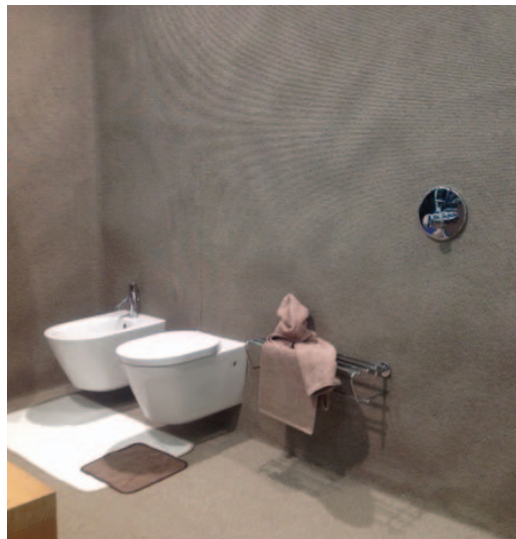
Floover **Woven** is a woven vinyl exclusive, inviting and unique.

The feeling of the textile is unmistakable, practically organic but the flooring, nevertheless, has all the advantages of vinyl: wear-resistant, easy to handle compared to textile floorings and simple to install.

The rigid board used, Floover **SplasH₂O Light**, is a 100% waterproof solution, with a PVC base of 5 mm. The clic system guarantees resistance up to 450 kg/ml.



WV4002 - Woven Calm Beige



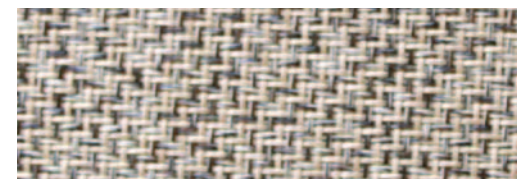
ROOMS WITH STYLE

Floover **Woven** is a woven vinyl exclusive, inviting and unique.

The feeling of the textile is unmistakable, practically organic but the flooring, nevertheless, has all the advantages of vinyl: wear-resistant, easy to handle compared to textile floorings and simple to install.

The rigid board used on the floor, Floover **SplasH2O Light**, is a 100% waterproof solution, with a PVC base of 5 mm.

The clic system guarantees resistance up to 450 kg/ml. Floover **Glue Down** solution in the walls is a traditional gluing system that allows you to install large areas with a small thickness. High traffic, comfort and acoustic performance are guaranteed.



WV4012 - Woven Divine



SMALL FULL EQUIPPED GYM

The synchronous pore structure of Synchro lines is one of the most innovative decorative elements in the flooring design, as it is capable of superbly enhancing the natural grain and contrasts of the wood, giving depth and realism to the entire surface.

The tactile sensation bestowed by the flooring is able to reproduce the authenticity and uniqueness of natural wood although it is not real wood.

Synchro range embodies perfectly all these features, as well to ensure, thanks to a surface of 0.5 mm PVC, a very high abrasion resistance for any requirement in both residential and commercial.

Floover **HDF** solution consists of 5 layers. The top layer is a resistant transparent PVC to protect the decor. This adapts perfectly to the elasticity of the vinyl below creating a nice walking surface. The fourth layer of HDF incorporates the clic installation system. The ultimate layer of cork gives an excellent thermal and acoustic insulation.



SC3012 - Synchro Plank Harmony Classic



HEADQUARTERS

Parc Empresarial Mas Blau. C/ Selva, 4.
08820 El Prat de Llobregat, Barcelona (Spain)
Tel. +34 938 913 310

WAREHOUSE

Pol. Ind. Molí del Racó
08770 - Sant Sadurní d' Anoya (Spain)
Tel. +34 938 913 310

FACTORY

Palü Daint
CH - 7537 Müstair (Switzerland)
Tel. +41 818 503 944 / Fax. +41 818 503 945

WAREHOUSE

St. Bartlmä
06020 Innsbruck (Austria)
Tel. +34 938 913 310

www.floover.com