





ELEGANCE  
AND  
EVOLUTION  
OF THE LVT

# COMPANY

The history of Floover began to take shape in 2006 with the union of Andrea Prati and Joan Ferrer , friends and co-owners with extensive experience in the flooring business. Based on the needs and requests of their customers, they developed a new product, Floover, multilayer rigid flooring with designs based on high-end vinyl with the Unilin click system. Later, they developed other versions and incorporated waterproof unlimited designs with remarkable success.

The aim of Floover is the continuous search for new and amazing products always based on the latest design and fashion, intending to improve the quality of life. Innovation and imagination have always been the basis of the brand and are key to its reputation in the market place, involving designers and architects to provide added value to the product. To date, Floover has achieved significant international presence.





## PRODUCTS

Floover's main production is located in Müstair, Switzerland, where the entire production process complies with Swiss law and with the European norms and standards, in addition to the very strict quality controls.

Floover provides products for both domestic and commercial use, always using new technologies and creating solutions demanded by the market, from gluing systems (Glue Down), through the floor with click system, to exterior solutions. All Floover products are easy to install and are specifically designed for high durability and longevity. All this is complemented with accessories needed to complete any project.

The extensive collection of designs can be installed in any space, including wet areas like bathrooms or terraces, Floover is the ultimate solution to your project.

original

# NATURAL

The Natural range is a new line of wood designs. Neat and clean designs from a natural oak in 5 different colors. The natural range has twice as much patterns and thus less repetition in the design, which gives an even more natural impression of the flooring as a whole.



NT1201  
White Washed



NT1202  
Grey Oak



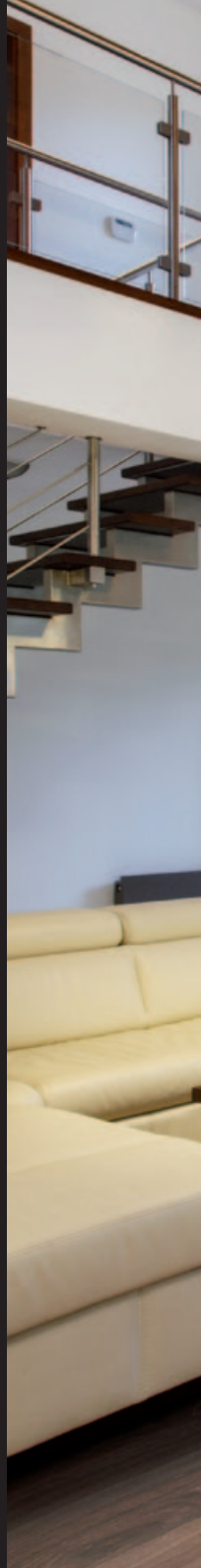
NT1203  
Volcano



NT1204  
White Oak



NT1205  
Natural Oak



**NEW**  
COLLECTION  
**2016**



Measurements: 1235 x 230 mm  
Wear Layer Thickness: 0,3 mm





**NEW**  
COLLECTION  
**2016**

original

# URBAN

The urban range is a new line of wood designs thought and conceived for city hotels and apartments alike:  
Clean wood design in 4 different colors, without knots, wood grain, neat.



UB1206  
Kensington



UB1207  
Chelsea



UB1208  
Knightsbridge



UB1209  
Belgravia



Measurements: 1235 x 230 mm  
Wear Layer Thickness: 0,3 mm

original

# LUXURY

The luxury range aims to represent the most exotic wood designs and is conceived for residential objects with a noble and luxurious atmosphere.



LX1210  
Chesnut



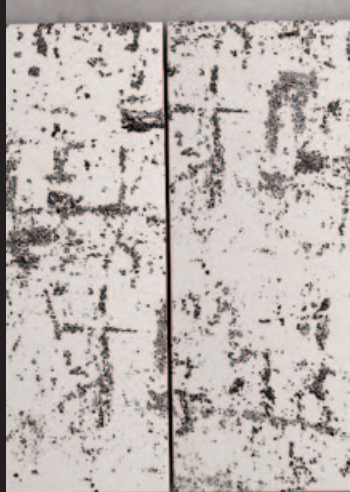
LX1211  
Walnut Grey



LX1212  
Walnut



LX1213  
Maple



**NEW**  
COLLECTION  
**2016**



Measurements: 1235 x 230 mm  
Wear Layer Thickness: 0,3 mm



Measurements: 1800 x 305 mm  
Wear Layer Thickness: 0,55 mm

NEW  
COLLECTION  
2016

long  
**LONGBOARD**

This line introduces four new Floover colours on an innovative and modern plank size and enables to visually widen the room and create a classic atmosphere.



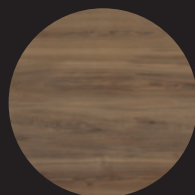
LB9001  
Molokai



LB9002  
Gardner



LB9003  
Necker



LB9004  
Laysan

NEW  
COLLECTION  
2016



plus

**PLUS**

The increased thickness of PVC guarantees maximum resistance of use and maximum resistance under any conditions of use and maximum protection against stains and chemicals.



IRT2005  
Iron



IRT2006  
Iron Gold



CMT2007  
Cement Silver



CMT2008  
Cement White



WDT2001  
Wood Wenge



WDT2002  
Wood White



WDT2003  
Industrial Grey



WDT2004  
Industrial Brown



CRT2104  
Black Slate

Measurements:  
915x305mm / 620x450mm  
Wear Layer  
Thickness: 0,55 mm

new  
collection



Measurements: 1230 x 225 mm  
Wear Layer Thickness: 0,3 mm



original

# SEQUOIA

Floover Sequoia is a really impressive line... Due to the length of its planks, its superficial texture and its decors, this line is particularly suitable for creating beautiful natural designs on the floor.



SQ1801  
Ancient Oak



SQ1805  
Oak Limewashed



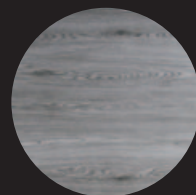
SQ1806  
Aspen Oak



SQ1807  
Ash



SQ1808  
Barrel Grey



SQ1809  
Excelsior Grey



Measurements: 915 x 305 mm  
Wear Layer Thickness: 0,3 mm

original

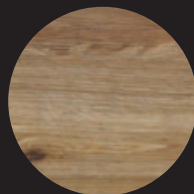
# COUNTRY



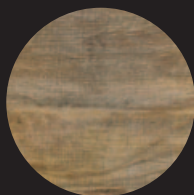
CT1702  
Tradition Classic



CT1703  
Tradition Lime Washed



CT1704  
Tradition Authentic



CT1706  
Rustic Old



CT1707  
Rustic Natur



CT1708  
Rustic Light

The flooring Floover Country, in its vivid and welcoming aspect, is able to give a hospitable warmth that can make your guests feel at ease. This collection consists of wood look decors so realistic that they recreate rustic and natural scenarios like those of old country houses.

original

# WOOD

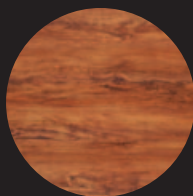
All the warmth and taste of genuine and authentic life reborn today in environments carefully designed to make you feel at home. Reassuring atmosphere, personality and ancient virtues meet the current values , giving rise to a new interpretation of natural spontaneity.



WD1003  
Wenge



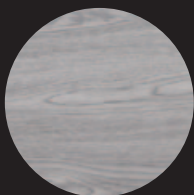
WD1004  
White Grey



WD1005  
Jatoba



WD1006  
Maple



WD1007  
Oak Grey



WD1009  
Oak White



Measurements: 915 x 305 mm  
Wear Layer Thickness: 0,3 mm



Measurements: 915 x 305mm / 620 x 450 mm  
Wear Layer Thickness: 0,3 mm



original

# STONE

Broadens the horizons of your imagination.  
A collection with infinite possibilities and  
unique characteristics of durability and  
comfort designed to meet all your needs  
with extraordinary simplicity.



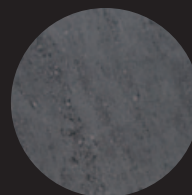
CR1102  
Ceramic Perla



CM1305  
Cement Grey



CM1304  
Cement Dark



CR1103  
Ceramic Antracita



CM1307  
Concrete Light



CM1306  
Concrete Dark



original

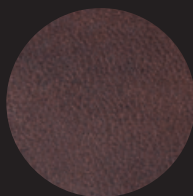
# LEATHER

Measurements:  
915x305mm / 620x450mm  
Wear Layer Thickness: 0,3 mm

Seduction and modernity. Due to its so real texture that appears to be genuine leather, with the slightest touch you are almost transported to a truly glamorous dimension.



LE1601  
Leather Black



LE1602N  
Leather Brown



LE1603  
Leather Crocodile



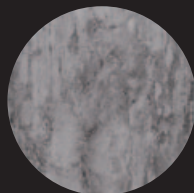
original

# METALLIC



Measurements:  
915x305mm / 620x450mm  
Wear Layer Thickness: 0,3 mm

Recreate futuristic, modern and avant-garde spaces. Thanks to the originality of its color and to the elegant texture, it is the perfect flooring for fine design.



MT1401  
Metallic Silver



MT1404  
Metallic Swing



Measurements: 1230 x 305 mm  
Wear Layer Thickness: 0,55 mm

synchro

# ENDLESS

The sophisticated design that results from simply joining the boards gives the impression of a unique 2.46m long single plank. The synchronisation technology of the surface assigns three dimensional effects. The combination of these two revolutionary applications gives an intense depth to the flooring that broadens your horizon and is especially appreciated by innovative designers and architects.



SC3013  
Endless Old



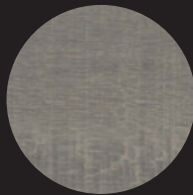
SC3014  
Endless Antique



SC3015  
Endless Real



SC3016  
Endless Ice



SC3017  
Endless Modern

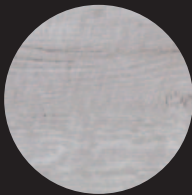


SC3018  
Endless Warm

synchro

# RUSTIC

The synchronous pore structure is one of the most innovative decorative elements in the flooring design, as it is capable of superbly enhancing the natural grain and contrasts of the wood, giving depth and realism to the entire surface. The synchro range perfectly embodies all these features and guarantees high abrasion resistance thanks to the 0.55mm wearing surface.



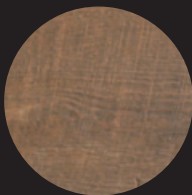
SC3001  
Rustic Oak Moscow



SC3002  
Rustic Oak Stockholm



SC3003  
Rustic Oak Zurich



SC3004  
Rustic Oak Amsterdam



SC3005  
Rustic Oak Berlin



SC3006  
Rustic Oak Dublin



Measurements: 1230 x 225mm  
Wear Layer Thickness: 0,55 mm



Measurements: 1230 x 305 mm  
Wear Layer Thickness: 0,55 mm

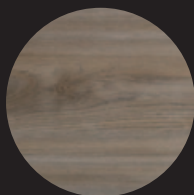
synchro

# PLANK

The synchronous structure enhances the natural grain and contrasts of the wood, giving depth and realism to the entire surface. Synchro range guarantees and ensures, thanks to a surface of 0.55 mm, a high abrasion resistance.



SC3007  
Plank Harmony Dark



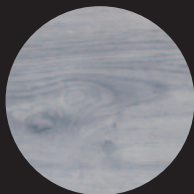
SC3008  
Plank Harmony Accent



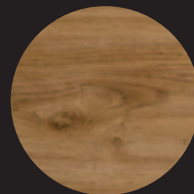
SC3009  
Plank Harmony White



SC3010  
Plank Harmony Light



SC3011  
Plank Harmony Grey



SC3012  
Plank Harmony  
Classic



< Original Natural  
NT1205 Natural Oak  
1235 x 230 mm  
Private Home  
Luzern (Switzerland)



< Original Urban  
UB1206 Kensington  
1235 x 230 mm  
Private apartment  
Marsella (France)



^ Original Luxury  
LX1210 - Chesnut  
1235 x 230 mm  
Private Home.  
Ordino (Andorra)

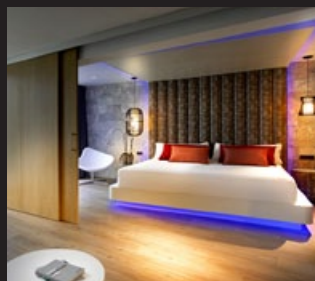


^ Original Longboard  
LB9002 Gardner  
1800 x 230 mm  
Private Room  
Barcelona (Spain)

< Group Plus  
IRT2005 Iron  
620 x 450 mm  
Luxor Hotel  
Wien (Austria)



< Original Sequoia  
SQ1802 Pastel Oak  
1230 x 225 mm  
Stefanel Shop  
Kraków (Poland)



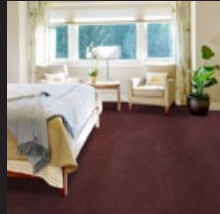
^ Original Country  
CT1702 Tradition classic  
915 x 305 mm  
Hard Rock Hotel. Ibiza (Spain)



Original Wood >  
WD1007 Oak Grey  
915 x 305 mm.  
Private home  
Barcelona (Spain)



< Original Stone  
CM1305 Cement Grey  
620 x 450 mm  
Retail shop  
Manchester (UK)



^ Original Leather  
LE1602N Leather Brown  
620 x 450 mm  
Private home  
Madrid (Spain)

^ Original Metallic  
MT1403 Metallic Black  
620 x 450 mm  
Savoy Club  
Bydgoszcz (Poland)



^ Synchro Endless  
SC3018 Endless Warm  
1230 x 305 mm  
Private home  
Valldoreix (Spain)

Synchro Rustic >  
SC3002 Rustic Oak  
Design Furniture shop  
1230 x 225 mm  
Brussels (Belgium)



< Synchro plank  
SC3009  
1230 X 305 mm  
Private home  
Hong Kong (China)



Sagrada Família  
SC3010 - Synchro Plank Harmony Light  
Barcelona (Spain)

---

### **HEADQUARTERS**

C/ Selva, 4 2<sup>nd</sup> Floor  
08820 El Prat de Llobregat · Barcelona (Spain)  
T. +34 938 913 310  
info@floover.com

### **FACTORY**

Palü Daint  
CH-7537 Müstair (Switzerland)  
T. +41 818 503 944

---



